



## Planning & Zoning News

The 2017 American Planning Association National Conference was held in New York City, NY. in the first week of May, the conference was packed full of session proposal topics of the on issues ranging from water conservation and transportation planning to compact urban land design strategies. There were over 6,300 professional planners, engineers, developers, design practitioners, Commissioners, and more in attendance.

*Continued on next page*



### IN THIS ISSUE...

- 1** Announcements  
Meeting Deadlines
- 2** Staff News
- 4** Announcements & 2017 Calendar
- 5** Building Activity & GIS Updates

## Staff Announcements

The Minnehaha County Planning Department has been busy preparing some zoning ordinance changes that affect concentrated animal feeding operations and conditional use permit approval time limits. Both of these items were unanimously recommended for approval by the Minnehaha County Planning Commission at the June 26 Meeting. The Minnehaha County Commission Public Hearing for these changes recommended for approval has been set for August 8, 2017 at or after 9:00 a.m. as part of the regularly scheduled County Commission meeting.

The highlighted changes in this zoning text amendment are related to the following:

Article 3.00 – A-1 Agricultural District – to amend Concentrated Animal Feeding Operation (CAFO) regulations and add aquaculture regulations

Article 7.00 – I-1 Light Industrial District – to add aquaculture regulations

Article 8.00 – I-2 General Industrial District – to add aquaculture regulations

*Continued on Page 4 of Insert*

### UPCOMING MEETINGS & IMPORTANT DEADLINES

#### Planning Commission

<b>MEETING</b>	<b>DEADLINE</b>
<b>Aug. 28</b>	<b>(Jul. 28)</b>
<b>Sept. 25</b>	<b>(Sept. 1)</b>
<b>Oct. 23</b>	<b>(Sept. 29)</b>
<b>Nov. 27</b>	<b>(Oct. 27)</b>

**No December meeting**

**Editor: David Heinold**

## Planning & Zoning News (cont.)

The keynote session featured Peter Leyden, founder of Reinvent, who spoke about the age of digitization. Trends have increasingly shown that computers are becoming more powerful and the sharing of information over the internet is growing exponentially. Specifically, the internet will continue to grow an additional 22% for video streaming in ten years since YouTube came online making up more than half of all internet traffic. The major companies driving most of the technological shifts in the economy are Apple, Alphabet, Microsoft, Amazon, and Facebook. Over the next 20 years, nearly half of current jobs are vulnerable to automation due to the changing nature of technological innovation from these companies. These statistics are an important indication of the change occurring in the reinvention of daily life processes.

One of my favorite sessions, *What Do We Do Post-Reed?*, based on popular demand from prior years was selected by the County Planning Division (CPD) executive committee that I currently serve as Chair. The session began with a historical overview of the Reed v. Town of Gilbert US Supreme Court decision regarding a case on temporary directional signage as well as key concepts from the US Constitution. Due to the recent case ruling, bans, exemptions, and categories are all subject to strict scrutiny by the courts that includes categorical signs and speaker or event based signage as content-based. The following quotations and facts are from the four speakers: “if you have to read the message to determine how it is regulated, then that regulation is content-based” as well as the fact that traffic and aesthetics are not compelling governmental interests in relation to sign regulations. Some key takeaways for best practices post-Reed are critical public involvement and stakeholder outreach, and make the regulations simple, logical, clear, organized, grouped sections, and never duplicate standards.



The CPD By-Right Session, *Protecting the Water You Drink*, was presented by Van McClendon with the Pulaski County, Arkansas Planning Department and Silvia Vargas of Community Planning, LLC in South Miami, Florida. The discussion began with a brief explanation of the Lake Maumelle Case Study for Central Arkansas Water, which is a lake that contains water more pristine than most major US Rivers according to the USGS. The Pulaski County Planning Department developed a Sediment and Erosion Control Plan Standards guide to reduce pollution from new development. The Lake Maumelle Watershed Management Plan was created ten years ago setting the stage for the development of the Sediment/Erosion Control Plan Standards, Land Use Plan to complement the subdivision regulations, and a stormwater management and drainage manual that includes a site evaluation tool.

*Continued on Page 3 of Insert*

## Building Activity Report (January-June 2017)

With the construction season in full swing, the Chief Building Inspector has been busy conducting inspections of mostly additions/replacements, remodels, and accessory structures the first part of 2017. The number of new single family dwelling is not anywhere near the total for this time period last year. The amount of commercial and industrial building projects is also far behind last year's total valuation.

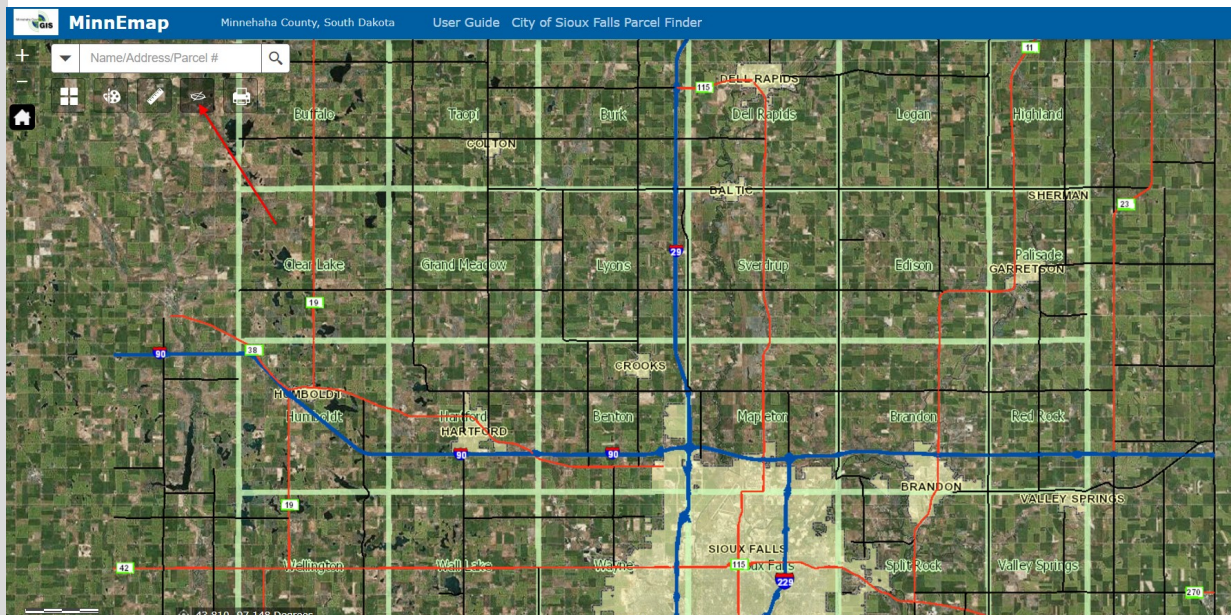
2017		2016	
Permits Issued	Construction Value	Permits Issued	Construction Value
<b>258</b>	<b>\$16,285,605.00</b>	<b>296</b>	<b>\$25,881,914.00</b>
(thousands \$)		(thousands \$)	
<b>Residential</b>		<b>Residential</b>	
New (16)	\$4,898.0	New (35)	\$9,542.2
Adds, remodel, acc., replacement (204)	\$8,009.7	Adds, remodel, acc., replacement (186)	\$5,385.6
<b>Commercial /Industrial (18)</b>		<b>Commercial /Industrial (46)</b>	
	\$1,242.0		\$8,565.5
<b>Agricultural (18)</b>		<b>Agricultural (26)</b>	
	\$2,135.9		\$2,388.6
<b>Total</b>		<b>Total</b>	
	<b>\$16,285.6</b>		<b>\$25,881.9</b>
<b>New dwellings</b>		<b>New dwellings</b>	
	16		35
<b>Mobile homes</b>		<b>Mobile homes</b>	
	0		0
<b>Total</b>		<b>Total</b>	
	<b>16</b>		<b>35</b>

( ) denotes number of permits YTD

### New Imagery Available!!

In April, 2017 Pictometry International Corp. flew new imagery for the entire county! High Resolution ortho imagery and 360 oblique imagery is now available on our public GIS Web Map.

<http://gis.minnehahacounty.org> Use the Pictometry tool on the webmap to get a 360 oblique view countywide!



### Geographic Information Systems News

### Commissioners

**Mike Cypher, Chair**  
2013-2017

**Doug Ode**  
2015-2019

**Bonnie Duffy, Vice Chair**  
2017-2021

**Paul Kostboth**  
2016-2020

**Jeff Barth**  
County Commission  
Representative - 2017

**Becky Randall**  
2013-2017

**Mike Ralston**  
2017-2021



### Staff

**Planning Director**  
Scott Anderson  
sanderson@minnehahacounty.org

**Building Inspector**  
Dan Kistler  
dkistler@minnehahacounty.org

**Planner I**  
David Heinold  
dheinold@minnehahacounty.org

**GIS Coordinator**  
Heidi Jerke  
hjerke@minnehahacounty.org

**Planner I**  
Kevin Hoekman  
khoekman@minnehahacounty.org

**GIS Analyst**  
Josh Hellman  
jhellman@minnehahacounty.org

**Zoning Technician**  
Deb Johnson  
djohnson@minnehahacounty.org

**Park Supervisor**  
John Mork

## Minnehaha County Planning & Zoning Newsletter

### Moving Forward ~ Planning Ahead

Minnehaha County Planning Department  
County Administration Building  
415 N. Dakota Ave.  
Sioux Falls, SD 57104  
Phone: (605) 367-4204 Fax: (605) 367-7413  
www.minnehahacounty.org

**Submit photos, news, stories, or events to us by  
September 30, 2017. More news to come!**